



Dairy Report 2007

For a Better
Understanding of
Milk Production
World-Wide



IFCN
International Farm
Comparison Network

3.60 Portugal – Milk Production Fact Sheet



António Morinho Rodrigues

Status and key developments

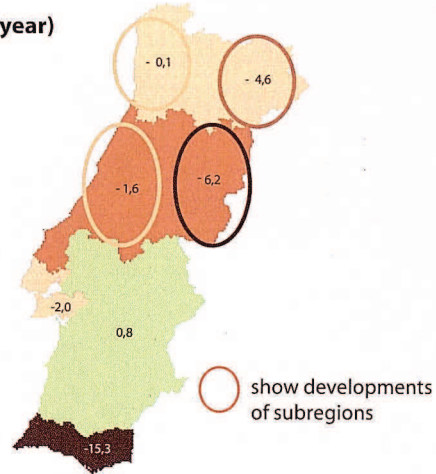
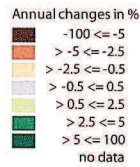
Status 2005

- No. of dairy farms: 14,700
- Average farm size: 22 cows per farm
- Main size class: 50-99 cows
- Milk/feed price ratio: 1.8

Key developments 2000 - 2005

- Farm growth: + 10% milk per farm and year
- Milk price: + 1.1% per year
- Feed prices: - 0.6% per year
- Milk/feed price ratio: Stable
- Land prices: - 4.4% per year
- Cull cow prices: + 1.7% per year
- Quota prices: + 10.8% per year

Change in milk production (% per year)



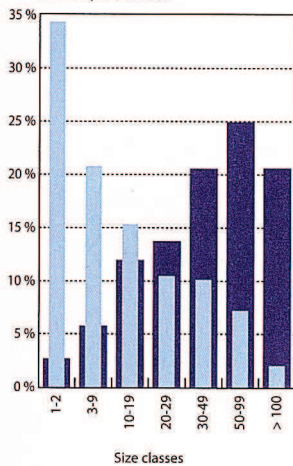
Key variables

	1996	1998	2000	2001	2002	2003	2004	2005	Annual growth rates 2000-2005
Milk production in natural fat / protein content									
Production (mill t)	1.7	1.8	2.0	2.0	2.0	1.9	1.9	2.0	-0.2%
Cows (in 1,000's)	376	372	355	338	341	328	338	324	-1.8%
Yield (t/cow/year)	4.6	4.8	5.6	6.0	6.0	5.8	5.7	6.1	1.7%
Farm structure									
No. of dairy farms (in 1,000's)	48.0	40.8	23.9	20.6	19.2	17.5	16.0	14.7	-9.3%
Average farm size (cows/farm)	7.8	9.1	14.9	16.4	17.8	18.7	21.1	22.0	8.2%
Milk per farm (t milk/farm/year)	36	44	83	99	106	108	121	134	10.0%
Prices in national currency									
Cull cow price (EUR/kg live weight)	0.63	0.70	0.73	0.77	0.77	0.72	0.71	0.79	1.7%
Land price – buy (EUR/ha)	5,000	5,000	5,000	4,000	4,000	4,000	4,000	4,000	-4.4%
Quota price (EUR/kg milk)	0.03	0.05	0.15	0.15	0.20	0.20	0.20	0.25	10.8%

Farm structure 2005

% of dairy farms in size classes
% of cows in size classes

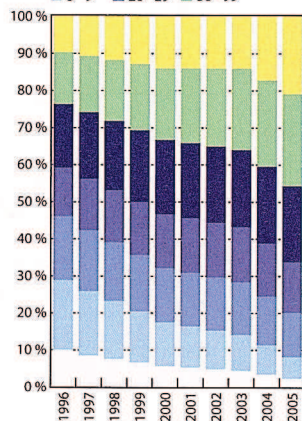
■ Cows per size class
■ Farms per size class



Farm structure

% of cows in size classes

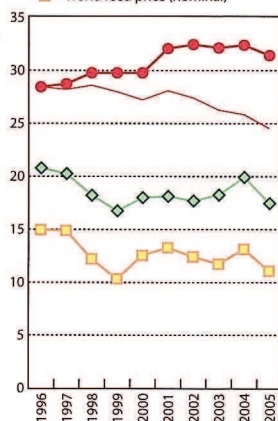
■ 1-2 ■ 10-19 ■ 30-49 ■ > 100
■ 3-9 ■ 20-29 ■ 50-99



Milk and feed price

EUR/100 kg

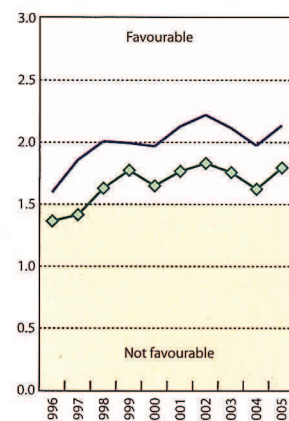
● Milk price (nominal) — Milk price (real)
◆ Feed price (nominal)
■ World feed price (nominal)



Milk / feed price ratio

Milk price / feed price

— Milk / corn price ratio
◆ Milk / feed price ratio



Explanations

Milk map details: Data base 2000 - 2005.

Source: National statistics, FAO, Eurostat, USDA, ZMP, IDF and estimations. Milk / feed price ratio: Method see Chapter 2. Milk prices are shown in ECM.